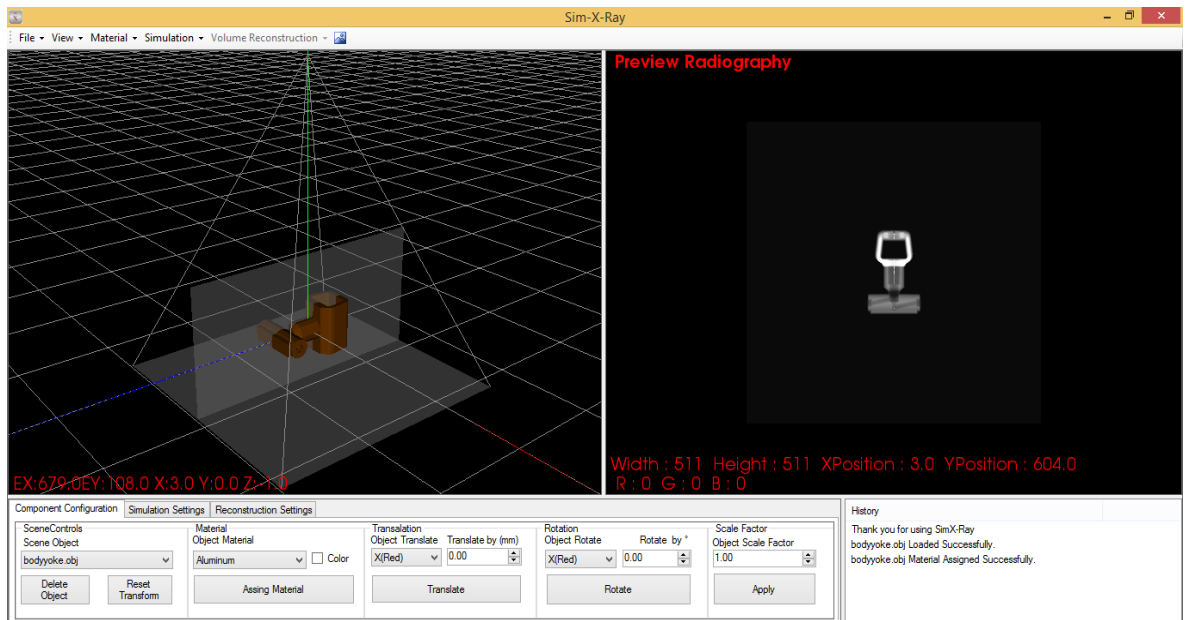


- ❖ A Ray Based software package for simulating the Digital X-ray Inspection.
- ❖ Import CAD files in .stl and .obj formats of components to be simulated
- ❖ Material Libraries to assign material for the loaded component
- ❖ Merging of components
- ❖ Modelling Standard Welds
- ❖ Options to embed defects
- ❖ Options to translate and/or rotate the components
- ❖ Ability to change Source and Detector Parameters
- ❖ Forward Simulation to generate a realistic radiographic image
- ❖ Simulation of Computed Tomography
- ❖ 3D Reconstruction from 2D XRay images – using CPU and GPU and store them as RAW files
- ❖ Saving back the reconstructed component in STL file format

Forward Simulation



3D Reconstruction

Loading the Raw File and extracting slices

