

Rapid Inspection of Composites with Phased Array UT A Dhvani Research Application Note



1st June 2015

NDT FOR AEROSPACE COMPONENTS

NON-CONTACT WATER COUPLED PAUT NDT SOLUTION

A solution for the rapid inspection of multilayered composites is a long awaited requirement of the aerospace industry since the widespread inculcation of composites into aerospace structures. The key features in these requirements are speed of inspection, defect detection efficiency, repeatability and reliability. Conventional ultrasound transducers in arrays are commonly employed for this purpose which has additional complexities like cable routing issues, heavy end manipulators, sophisticated multi-channel ultrasonic pulser-recievers, data interpretation and representation difficulties etc. Phased array ultrasound technology has emerged as a potential solution in

the past years to solve the bottlenecks with more efficient emission-reception properties and damping, making it an ideal choice for the application. Phased array transducers, by providing precise time delays and shifts are capable of variable focal lengths, aperture sizes, dynamic depth focusing, electronic angle sweeping and lots more. These properties enable the scanning of the samples in no time thereby reducing the scanning time by a factor of 1/25. An advanced manipulator capable of maneuvering the PAUT probe in multiple degrees of freedom coupled with advanced and user friendly software can do wonders, making impossible inspections possible.

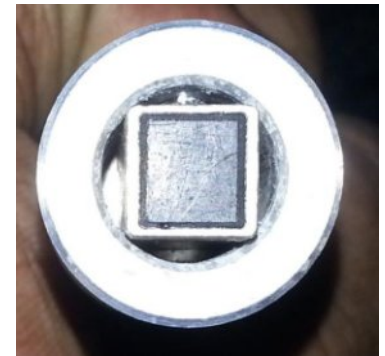
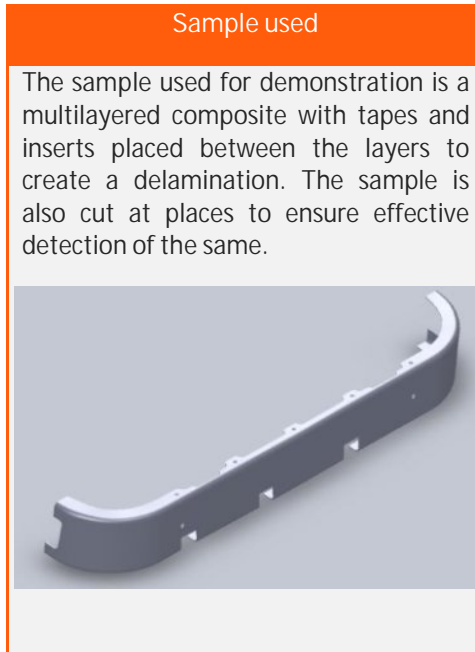
IN THIS ISSUE

SHRUTI[®] (Scanning High Resolution Ultrasonic Inspection System) is an indigenously developed customizable, automated, multi-axis robotic scanner. Along with phased array ultrasonic probe, advanced data analysis (extut[®]) and image analysis packages (imagine[®], SimScan[®], SimSonic[®]), SHRUTI facilitates easy inspection of samples and components. To illustrate the power of PAUT inspection a composite component with simulated defects is scanned with both conventional ultrasound and phased array ultrasound. For conventional scanning the same machine **SHRUTI**[®] can be used which is equipped with an advanced manipulator capable of

accommodating both Conventional and PAUT probes.

efficiency, inspection time and ease of inspection.

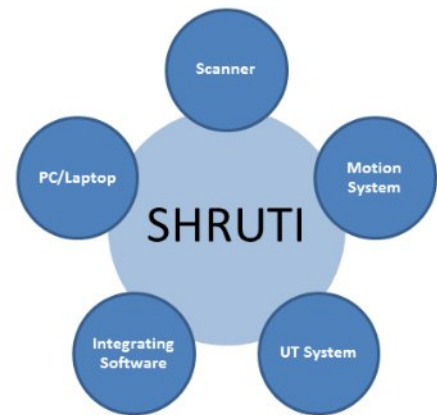
Experimental Parameters	
Conventional Probe	5 MHz 2 inch focused
PAUT Probe	5 MHz 128 element linear array
PAUT Probe	5 MHz 16 element linear array
Machine	SHRUTI



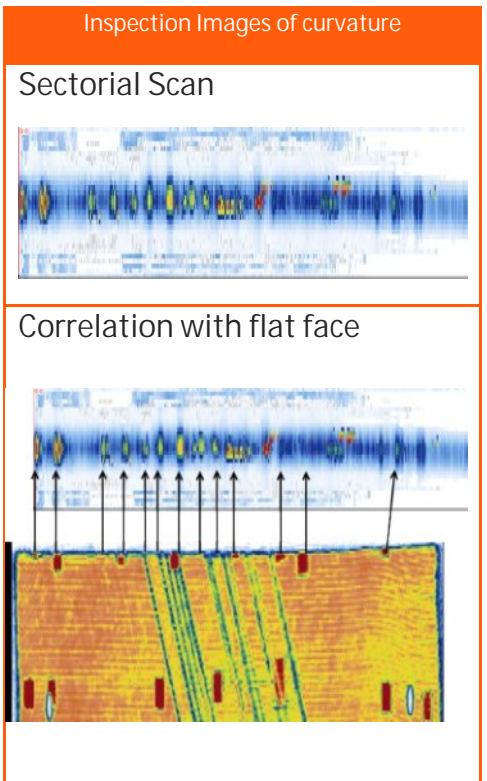
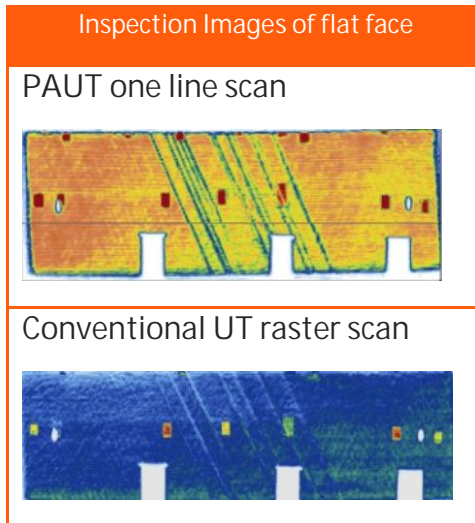
16 element PAUT probe in adapter casing

SHRUTI® offers very high resolution images of the test coupon with very high scanning speeds. The complete instrument control is through the software. Skeleton of the system is being built from lightweight aluminum extrusions which are upgraded to Stainless Steel for heavy duty applications. All the electrical connections are rugged and properly routed following industrial standards offering very durable and reliable running. Components of flat, cylindrical, and complex shapes can be imaged.

The end manipulator automatically adjusts itself to the curvature either from a CAD drawing of the component or in teach mode. The phased array is in sectorial mode sweeping electronically from -15 to +15 degree effectively covering the corner regions detecting the defects



The use of phased array probes instead of conventional ultrasound array will give you a quantum leap in terms of



Above shown images are for the flat face of the component, to ensure 100% inspection of the components the curved region also needs to be inspected for which the end manipulator needs advanced maneuvering features. For ease a 16 element PAUT probe is used as shown in picture

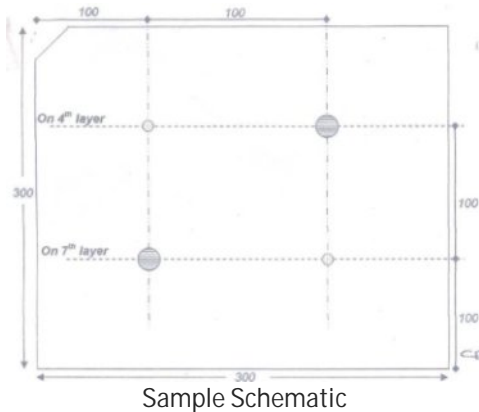
All the sections are imaged with proper calibration and gates which can be stitched together to display on the surface of the CAD

drawing to create a complete picture of the inspection results

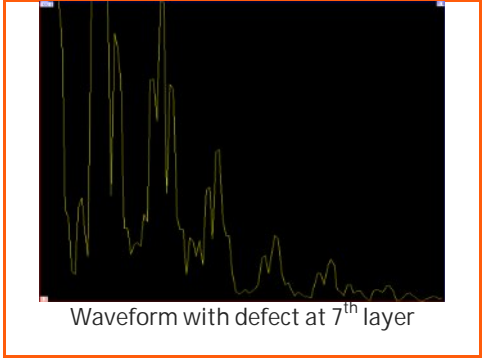
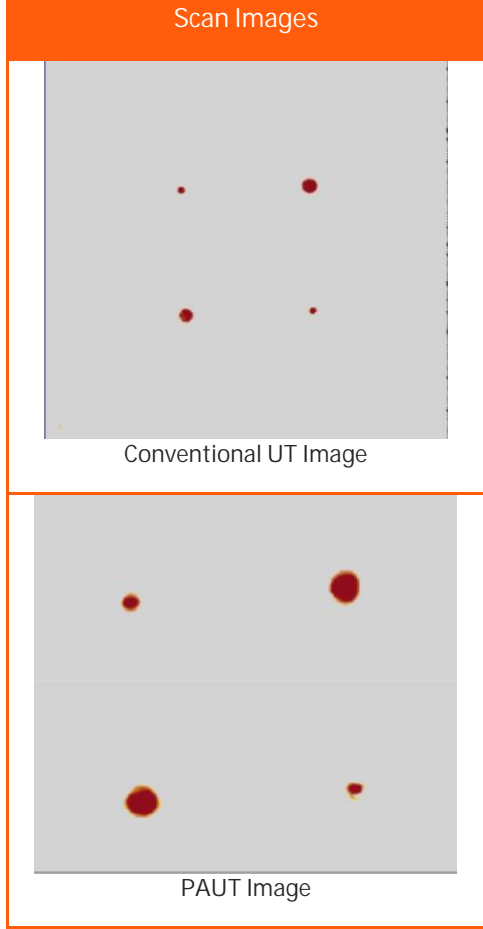
Scanning time comparison

Conventional UT, Raster mode with resolution 1 mm by 1 mm at 150 mm/s speed	20 minutes
PAUT one line scan	20 seconds

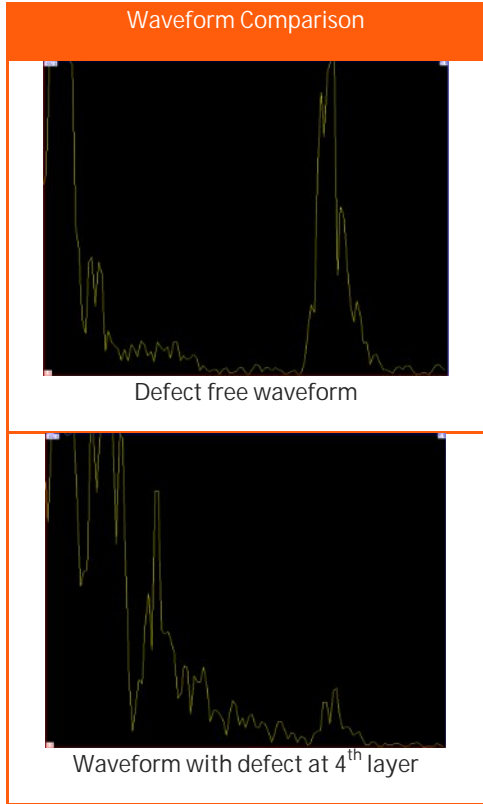
The resolution offered by PAUT is comparable to that of conventional UT against the popular myths that as PAUT focuses in the near field there are chances that the resolution will be less. For resolution study a 300 by 300 by 5 mm sample having 33 layers with each layer thickness 0.15 mm is taken, 5 mm and 10 mm Teflon inserts are placed at 4th and 7th layers.



The sample is scanned with a 5 MHz 2 inch focused conventional probe and a 5 MHz 128 element linear array probe. Again the same machine SHRUTI is used for the inspection and below is the result.

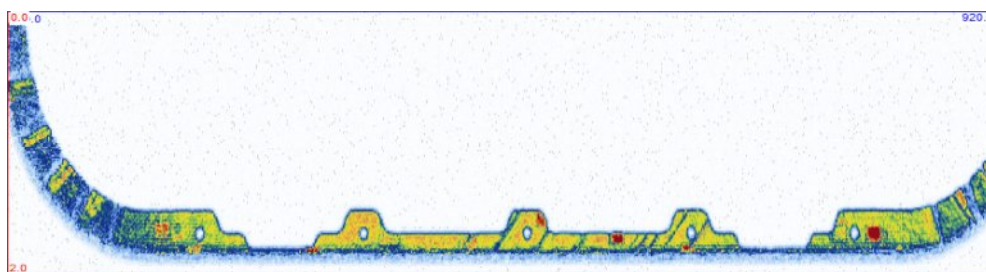
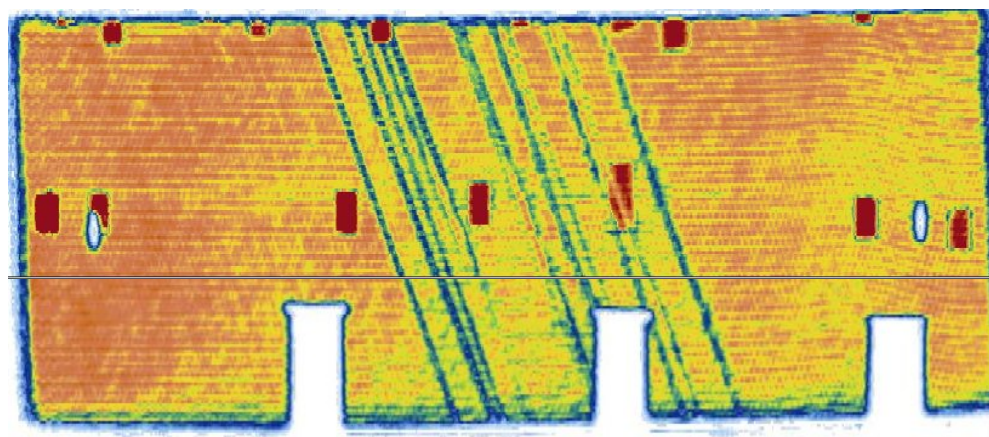


The above images show the vertical resolution of the PAUT probes. Phased array probes give added advantage in terms of speed of inspection and ease of operation and are available in a variety of sizes, configurations and shapes. PAUT inspection coupled with SHRUTI is ideal for aerospace composite component inspection.



Rapid
Inspection
of
Composites
with
Phased
Array UT
A Dhvani
Research
Application
Note

Chennai, INDIA



PAUT Imaged with 128 element linear array immersion probe

For more information please contact:

Ms. Sujatha Chakravarthy

Managing Director

Dhvani Research and Development Solutions Pvt Ltd.

01J, First Floor, IITM Research Park,

Kanagam Road, Taramani, Chennai 600 113 INDIA

Email: sujatha.c@dhvani-research.com

Tel/Fax: +91-44-6646-9880